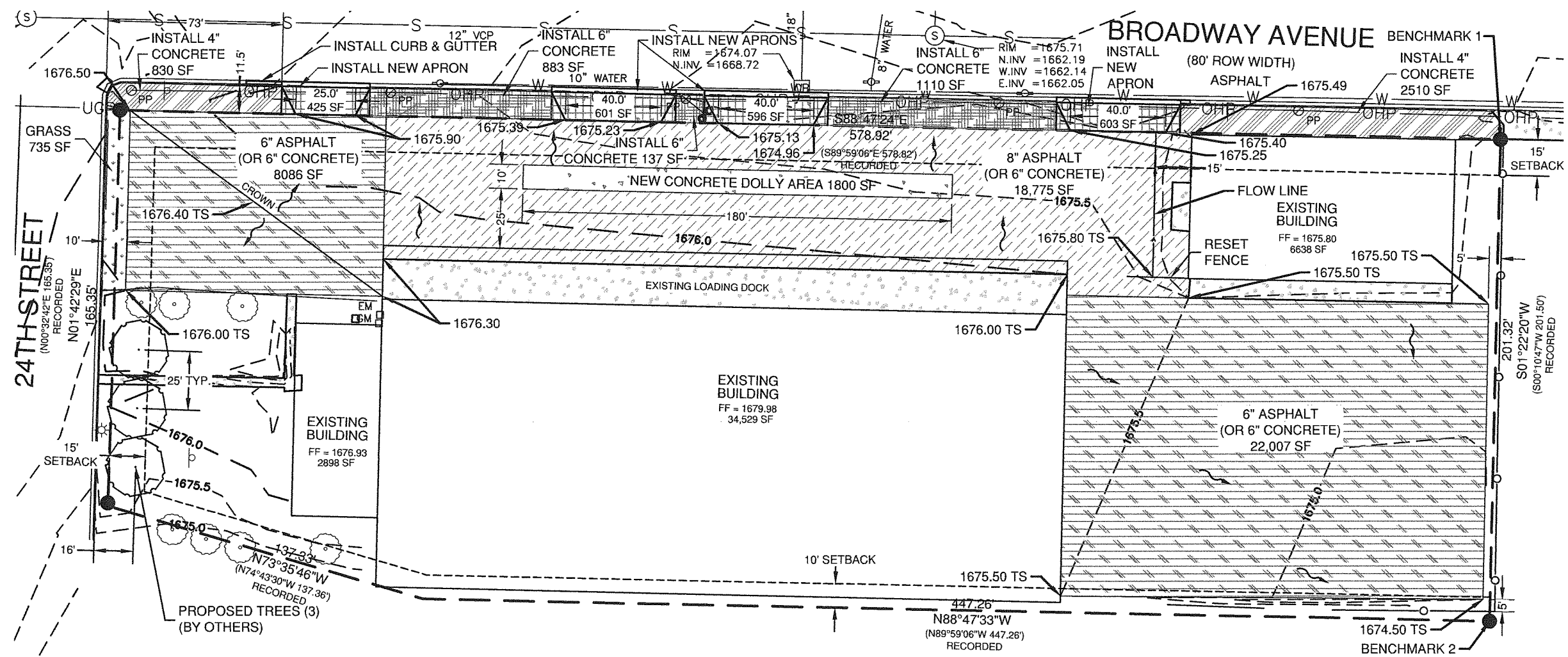


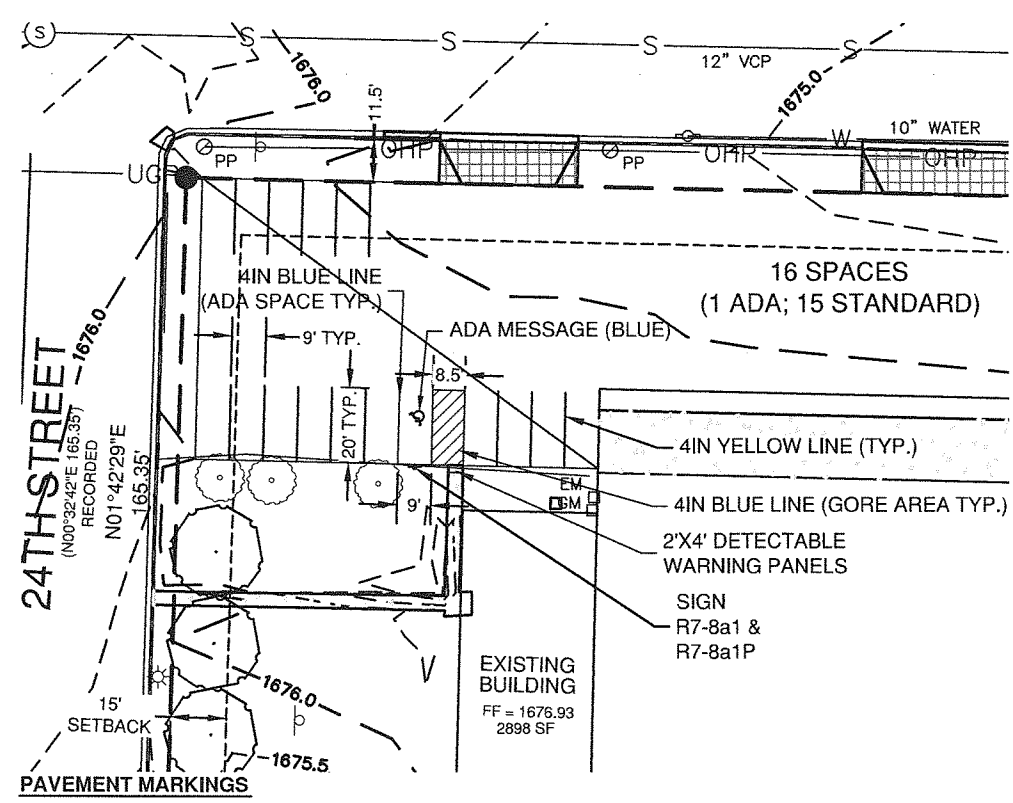
Revision	Date	Description	By

LEGEND

- EXISTING CONCRETE
 - EXISTING FENCE
 - WATER LINE
 - UNDERGROUND POWER
 - OVERHEAD POWER
 - PROPERTY LINE
 - PROPOSED CONTOURS
 - DRAINAGE FLOW ARROWS
- AREA SURFACES**
- GRASS AREA
 - 6" ASPHALT OR 6" CONCRETE AREA
 - 8" ASPHALT OR 6" CONCRETE AREA
 - 4" CONCRETE AREA
 - 6" CONCRETE AREA
 - 8" CONCRETE AREA
 - 8" DRIVEWAY AREA
- TS = TOP OF SURFACE



PAVING AND PROPOSED LANDSCAPE



PAVEMENT MARKINGS

TREES:
 HARVEST GOLD LINDEN (1.5" CAL.) - 3 EA
 Tilia x mongolica 'Harvest Gold'

IMPERVIOUS AREA AFTER CONSTRUCTION:

EXISTING BUILDINGS	44,065 SF
SURFACING	65,697 SF
TOTAL:	109,762 SF

NOTE: DRIVEWAYS TO BE CONSTRUCTED ACCORDING TO THE CITY OF BISMARCK STANDARD DETAIL 600-10 "COMMERCIAL DRIVEWAY". THE 6' ALONG THE PROPERTY LINE SHALL NOT EXCEED 2% SLOPE.

APPROVED BY FORESTRY
[Signature]
 CITY FORESTER 6-5-14
 TITLE DATE

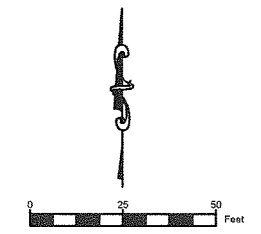
APPROVED BY PLANNING
[Signature]
 PLANNER 06-05-14
 TITLE DATE

THIS DOCUMENT WAS ORIGINALLY
 ISSUED AND SEALED BY
 CLINTON KNUTSON
 REGISTRATION NUMBER
 PE-4523
 ON 05/01/2014 AND THE ORIGINAL
 DOCUMENT IS STORED AT
 ULTEIG ENGINEERS

Ulteig
 1412 Basin Avenue
 Bismarck, North Dakota 58504
 Phone: 701.258.6507 Fax: 701.224.1163
 Web: www.ulteig.com

Drawn By: NK/AW
 Checked By: CK
 Approved By: CK

PROPOSED SITE PLAN



Project Number: 13.01146
 Date: May 1, 2014
 Sheets: 6 of 7