

### LANDSCAPING PLAN

- STREET TREES**  
NUMBER - 5  
ORNAMENTAL: 1" BOTTOM BRANCHES, 3- FEET ABOVE GRADE, 30' MAXIMUM HEIGHT.  
SPECIES: IVORY SILK LILAC
- PARKING SHRUBS**  
NUMBER - 30 PLANTS  
MINIMUM CONTAINER SIZE: 2 GALLONS  
MAXIMUM MATURE HEIGHT: 3- FEET  
SPECIES: MIX OF MAGIC CARPET SPIREA, GOLDEN RUBY BARBERRY, AND SUPERSTAR SPIREA CONIFER.
- LARGE CONIFER TREE:**  
NUMBER - 5 PLANTS  
MINIMUM HEIGHT: 4- FEET  
MAXIMUM HEIGHT: 20- FEET  
SPACING VARIED  
SPECIES: TENNEBAUM PINE.
- GRASSED AREAS**  
YARD SEED: 14,900 SF  
OPINION OF INSTALLED COST: \$15,000

### WATER SERVICE

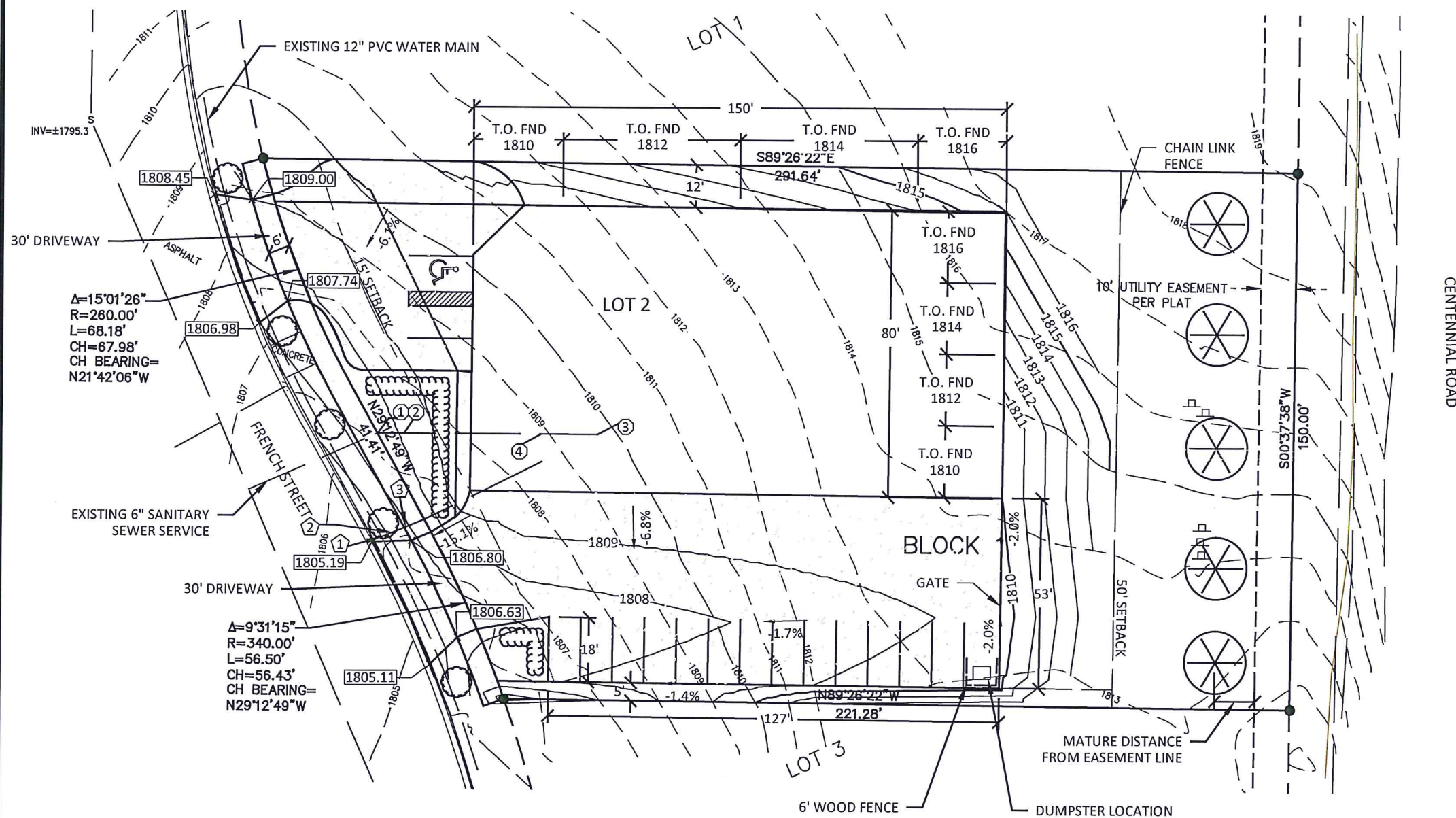
1. INSTALL 12" x 4" SADDLE TAP
2. INSTALL APPROXIMATELY 50' OF 4" PVC PIPE AT A MINIMUM 7.5 FEET OF COVER WHILE MAINTAINING 10 FOOT MINIMUM SEPARATION FROM SANITARY SEWER
3. INSTALL 4" GATE VALVE (CURBSTOP) AT PROPERTY LINE

### NOTES

1. TOTAL PROPERTY AREA: 889 ACRES  
IMPERVIOUS AREA: 0.546 ACRES
2. THE VERTICAL DATUM OF THE SURVEY DATA SHOWN HEREON IS THE NORTH AMERICAN VERTICAL DATUM OF 1988 (NAVD88).
3. PARKING SPACES: 17 SPACES TOTAL  
WIDTH = 9'  
LENGTH = 18'
4. HANDICAP PARKING. ADJUST CONTOURS TO ALLOW < 2% SLOPE

### SANITARY SEWER SERVICE

1. INVERT AT PROPERTY LINE = 1795.07  
RECOMMEND TO PROVIDE WYE AND SURFACE CLEANOUT AT SEWER CONNECTION.
2. INSTALL APPROXIMATELY 62' OF 6" SANITARY PIPE, 0.4% MINIMUM SLOPE.
3. INSTALL SAND TRAP 60 GALLON, 20 GPM ZURN MODEL Z1187-S1-20 OR EQUIVALENT SIZE AND MANUFACTURE.
4. WYE TO PROVIDE SEWER TO BATHROOM FACILITIES.



APPROVED BY FORESTRY

*[Signature]*

LANDSCAPING 9-2-16  
TITLE DATE

APPROVED BY PLANNING

*[Signature]*

9-2-16  
TITLE DATE

## SURVEYOR Sambatek

Engineering | Surveying  
Planning | Environmental  
12800 Whitewater Drive Suite 300  
Minnetonka, MN 55343  
763.476.6010 telephone  
763.476.8532 facsimile  
www.sambatek.com

## ENGINEER

3617 Bottom Road  
Bismarck, ND 58504  
701-527-2451



WaterSmart

## Project Centennial Collision and Paint

### Location

2513 French Street  
Bismarck, ND 701-400-4964  
Lot 2, Block 1  
Stonecrest Second Addition

### Certification

This document was originally issued and sealed by Russel R. Sorenson, ND PE - 4694 on 8/25/17 and the original document is stored at 3617 Bottom Road Bismarck, ND 58504

### Summary

Approved: Drawn: CS

### Revision History

No.	Date	By	Submittal / Rev.
7/11/2016			Original
8/8/2016			Revised
8/24/16			Update

## Sheet Title SITE PLAN

### Sheet No. Revision

1

Project No. WSI20564