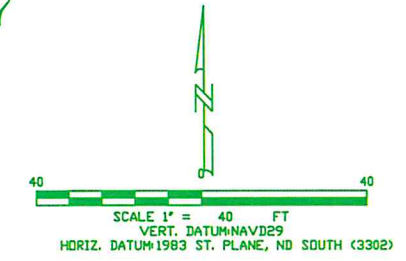
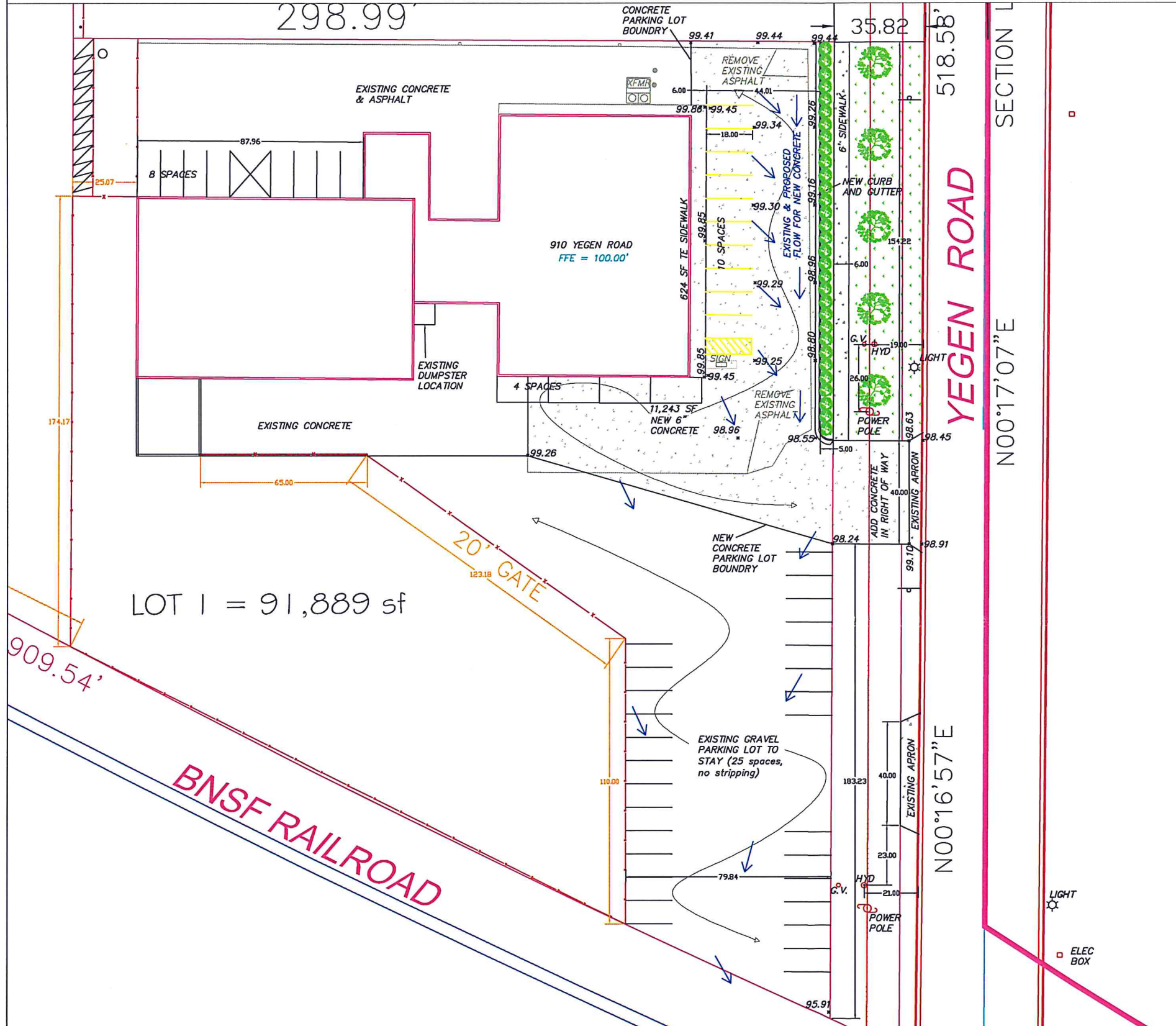


# 910 YEGEN ROAD PROPOSED PARKING LOT CONCRETE - Rev 7/31/17




APPROVED BY FORESTRY  
*mbnd*  
 LANDSCAPE  
 TITLE  
 7/31/17  
 DATE

APPROVED BY PLANNING  
*Blair*  
 LANDSCAPE  
 TITLE  
 7/31/17  
 DATE



### LANDSCAPE LEGEND

#### TREES:

-  JAPANESE TREE LILAC  
H=25', S=25'  
SYRINGA RETICULATA  
SIZE=1-1/2" CALIPER, QUANTITY=39
-  PIGMY GLOBE ARBORVITAE  
H=2'-4", S=2'-4"  
THUJA OCCIDENTALIS 'PYGMY GLOBE'  
SIZE=2 GAL, QUANTITY=114
-  PERMANENT GREEN AREA

LENGTH OF THE LOT ALONG STREET FRONT EAST: 155 TOTAL FEET @ 3 TREES PER 100 FEET = 5 TREES

TOTAL STREET TREES REQUIRED = 5 TREES PROVIDED = 5  
 PERIMETER PARKING LOT LANDSCAPING: 5 TREES & 37 SHRUBS

Sp 2017-018