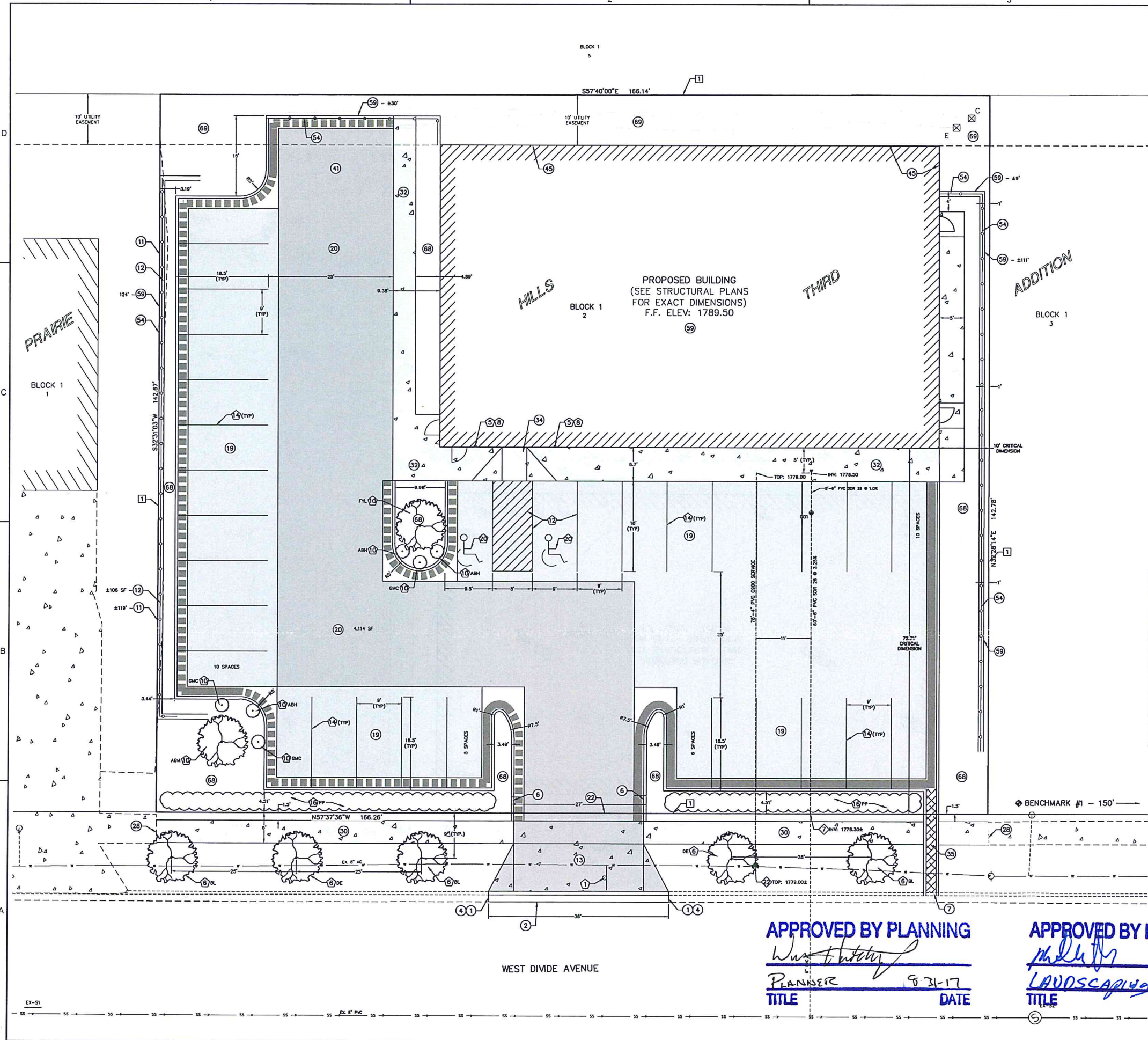


FILE LOCATION: R:\C\1\3D\Projects\19820\DRAWINGS\DESIGN\19820 SITE.dwg



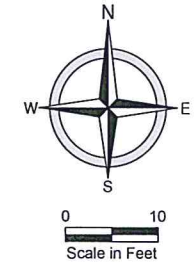
- GENERAL NOTATIONS**
- 1 PROPERTY LINE.
 - SITE NOTATIONS - CURB & GUTTER**
 - 1 SAWCUT EXISTING CURB AND GUTTER FULL DEPTH.
 - 2 SAWCUT AND REMOVE EXISTING HIGHBACK CURB AND GUTTER AND REPLACE WITH HAZARDOUS CURB AND GUTTER. REPLACEMENT LIMITED TO ONE WEEK FROM THE OF REMOVAL.
 - 3 REMOVE AND REPLACE EXISTING HIGHBACK CURB AND GUTTER.
 - 4 CONNECT TO EXISTING CURB AND GUTTER.
 - 5 TAPER LAST 5' OF CURB AND GUTTER HEIGHT FROM 6" TO 1/4".
 - 7 2' CURB CUT WITH TAPERED OPENING.
 - SITE NOTATIONS - PAVEMENT & DRIVEWAY**
 - 11 SAWCUT EXISTING ASPHALT PAVEMENT FULL DEPTH.
 - 12 REMOVE EXISTING ASPHALT PAVEMENT.
 - 13 7" CONCRETE DRIVEWAY.
 - 19 CONCRETE PAVEMENT SURFACE - REGULAR.
 - 20 CONCRETE PAVEMENT SURFACE - HEAVY DUTY.
 - 22 PLACE EXPANSION JOINT WITH #4 X 12" SMOOTH DOMELS @ 24" SPACING MID-DEPTH THROUGH DRIVEWAY AT PROPERTY LINE.
 - SITE NOTATIONS - SIDEWALK & PATH**
 - 28 CONNECT TO EXISTING SIDEWALK.
 - 30 4" CONCRETE SIDEWALK.
 - 32 THICKENED EDGE SIDEWALK.
 - 34 6" CONCRETE CURB RAMP.
 - 35 SIDEWALK TRENCH DRAIN.
 - SITE NOTATIONS - GENERAL**
 - 41 TRASH ENCLOSURE/DUMPSTER AREA. SEE ARCHITECTURAL PLANS.
 - 45 EXPOSED FOUNDATION WALL. SEE STRUCTURAL PLANS.
 - 54 DECORATIVE FENCE (BY OTHERS).
 - 59 SEE ARCHITECTURAL PLANS.
 - 59 12" BLOCK RETAINING WALL (BY OTHERS).
 - 68 REPLACE TOPSOIL THEN INSTALL SEED AND HYDROMULCH.
 - 68 REPLACE TOPSOIL THEN INSTALL SEED AND STRAW MULCH.
 - SITE NOTATIONS - SIGNING**
 - 1 RELOCATE EXISTING STREET SIGN.
 - 5 VAN ACCESSIBLE PARKING SIGN ASSEMBLY.
 - 8 ATTACH PARKING SIGN ASSEMBLY TO BUILDING.
 - SITE NOTATIONS - STRIPING**
 - 12 4" BLUE GROOVED.
 - 14 4" YELLOW GROOVED.
 - 20 BLUE GROOVED MESSAGE.
 - UTILITY NOTATIONS - SANITARY SEWER**
 - 7 CONNECT TO EXISTING SANITARY SEWER SERVICE. ASSUMED ELEVATION.
 - UTILITY NOTATIONS - WATER MAIN**
 - 22 CUT IN 12" X 8" TEE OR INSTALL 12" X 6" TAPPING SLEEVE AND VALVE ON EXISTING MAIN.
 - LANDSCAPE NOTATIONS**
 - 6 STREET TREE.
 - 10 OPEN SPACE PLANTING.
 - 16 PARKING LOT PERIMETER PLANTING.

PLANTING INFORMATION

PLANT NAME	SYMBOL	SCIENTIFIC NAME	QUANTITY
LARGE, MATURE DECIDUOUS TREE (1.5" - 3" CALIPER)			
AUTUMN BLAZE MAPLE	ABM	ACER X FREEMANII 'JEFFERSRED'	1
BOULEVARD LINDEN	BL	TILIA AMERICANA 'BOULEVARD'	3
DISCOVERY ELM	DE	ULMUS DAVIDIANA VAR. JAPONICA 'DISCOVERY'	2
FRONT YARD LINDEN	FYL	TILIA AMERICANA 'BAILYARD'	1
MATURE SHRUB (2 GALLON)			
ANNABELLE HYDRANGEA	ABH	HYDRANGEA ARBORESCENS 'ANNABELLE'	3
GOLDEN CURRANT	GMC	RIBES AUREUM	3
DECIDUOUS HEDGE ROW			
PYGMY PEA SHRUB	PP	CARAGANA PYGMAEA	CONT.

NEW STRUCTURE SCHEDULE
 COI
 RME: 1788.45
 NYE: 1778.24

EXISTING STRUCTURE SCHEDULE
 EX-S1
 RME: 1793.05
 NYE: 1781.06
 SE NYE: 1781.80



BENCHMARK LIST
 ALL ELEVATIONS SHOWN ARE NGVD 29

NO.	DESCRIPTION	LOCATION	ELEV.
1	TOP NUT ON HYDRANT	SOUTHEAST OF THE SOUTHEAST LOT CORNER ALONG DIVIDE AVENUE	1778.37

APPROVED BY PLANNING
Wanda Hutchins
 PLANNER
 TITLE
 8-31-17
 DATE

APPROVED BY FORESTRY
Michael J. ...
 LANDSCAPING
 TITLE
 8-31-17
 DATE

This document was originally issued and sealed by **Jeremy Demald**, Registration No. PE-8769, on 08/24/17 and the original document is stored at **Moore Engineering, Inc.**, West Fargo, N.D.



SITE, UTILITY, AND LANDSCAPE PLAN
 GOEBEL PEDIATRIC DENTISTRY
 1148 WEST DIVIDE AVENUE
 BISMARCK, NORTH DAKOTA
 SITE, UTILITY, AND LANDSCAPE PLAN

DATE:	08.10.17
REVISED:	08.24.17
REVISED:	---
REVISED:	---
REVISED:	---
RECORD:	---

PROJECT No.	19820
MANAGER:	SWM
DESIGNER:	JJD
DRAFTER:	LAZ
REVIEWER:	KJMc

C-401
 SHEET 3 OF 5