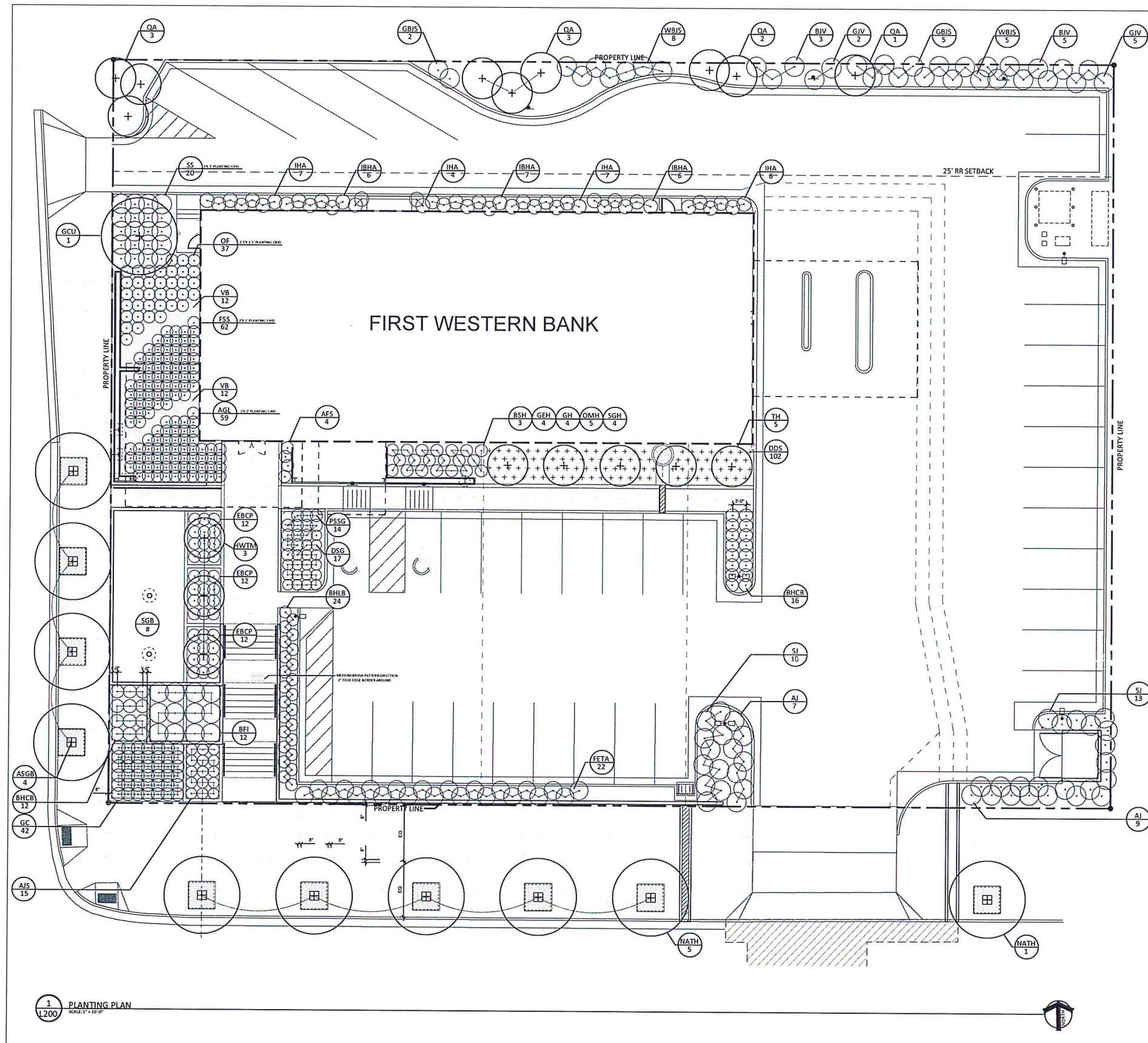


APPROVED BY FORESTRY
Mudbury
 TITLE LANDSCAPE 5/11/17
 DATE

APPROVED BY PLANNING
Mary Robinson
 TITLE PLANNING 5/11/17
 DATE



Plant List

Symbol	Common Name / Scientific Name	Size / Condition	Quantity	Notes
Deciduous Boulevard Trees				
ASGB	Ashum Sanderling Ohio Buckeye <i>Asclepias ornoides</i> 'Autumn Splendor'	2' B & B	4	West Boulevard. Alternative if all want to be the same: <i>Quercus coccinea</i> var. <i>inermis</i> 'Harris'; <i>Thuja occidentalis</i> 'Spartan'; <i>Thuja occidentalis</i> 'Green Gem'; <i>Crotonia crux-galli</i> var. <i>inermis</i> ; <i>Thomsonia coccinea</i> South Boulevard. Alternative if all want to be other species: <i>Thuja occidentalis</i> 'Spartan'; <i>Thuja occidentalis</i> 'Green Gem'; <i>Thuja occidentalis</i> 'Harvest Gold'; <i>Thuja occidentalis</i> 'Autumn Splendor'; <i>Autumn</i>
NATH	Golden Escallop 'Harris' 'Harris' Northern Asplenium 'Thomson's Honeylocust'	2 1/2' B & B	6	
Deciduous Trees				
QA	Quaking Aspen <i>Picea canadensis</i>	1 1/2' B & B	9	North buffer.
GC11	Golden Cascade Littleleaf Linden <i>Tilia cordata</i> 'Golden Cascade'	2' B & B	1	SW corner. Potential to look at specimen or larger tree - Jeffries Nurseries, Ltd., Portage la Prairie, MB
Ornamental Small Deciduous Trees				
HWTH	Hot Wings Tatarian Maple <i>Acer tataricum</i> 'Starline'	2' B & B	3	Plaza.
TH	Toba Hawthorne <i>Crataegus x monticola</i> 'Toba'	1.75' B & B	5	East of front entry/south elevation.
Coniferous Trees				
GBIS	Grizzly Bear Rocky Mountain Juniper <i>Juniperus scopulorum</i> 'Grizzly Bear'	6' B & B	7	North buffer.
WBIS	Wichita Blue Rocky Mountain Juniper <i>Juniperus scopulorum</i> 'Wichita Blue'	6' B & B	13	North buffer.
BIV	Blue Eastern Redcedar <i>Juniperus virginiana</i> 'Buck'	6' B & B	8	North buffer.
GVV	Silver Eastern Redcedar <i>Juniperus virginiana</i> 'Gibbs'	6' B & B	7	North buffer.
Deciduous Shrubs				
IHA	Innocentia Hydrangea <i>Hydrangea arborescens</i> 'Annabelle'	3 gallon	24	North elevation. Alternative is <i>Hydrangea arborescens</i> 'Annabelle'; <i>Annabelle Smooth Hydrangea</i> .
IBHA	Innocentia Blush Hydrangea <i>Hydrangea arborescens</i> 'Innocentia'	3 gallon	19	North elevation. <i>Hydrangea arborescens</i> 'Annabelle'; <i>Annabelle Smooth Hydrangea</i> .
SS	Serenity Sorbus <i>Sorbus sorbifolia</i> 'Serenity'	5 gallon	20	SW corner.
ABS	Aurora False Spirea <i>Sorbus x 'Aurora'</i>	5 gallon	4	Immediately east of front entry door.
Coniferous Shrubs				
SI	Savin Juniper <i>Juniperus sabina</i>	5 gallon	23	SE corner visitor lot and dumpster surround.
AJ	Autumn Gold Juniper <i>Juniperus horizontalis</i> 'Autumn Gold'	5 gallon	16	SE corner visitor lot and dumpster surround.
FETA	First Edition Techno Arborvitae <i>Thuja occidentalis</i> 'Baldwin'	10 gallon	22	Side of visitor lot.
Ornamental Grasses				
DSG	Dakota Switchgrass <i>Panicum virgatum</i> 'Dakota'	2 gallon	17	Plaza/visitor parking lot area.
PSSG	Prairie Sky Switchgrass <i>Panicum virgatum</i> 'Prairie Sky'	2 gallon	14	Plaza/visitor parking lot area.
BHLB	Blue Heaven Little Bluestem <i>Schizochyrium scoparium</i> 'Minuteman'	2 gallon	52	Plaza/visitor parking lot area.
Perennials				
GC	Gallic Chives <i>Allium tuberosum</i>	1 gallon	42	Plaza.
BFI	Blue False Indigo <i>Baptisia australis</i>	1 gallon	12	Plaza.
BSH	Brother Stefan Hosta Hosta 'Brother Stefan'	1 gallon	3	Inside south screen wall (north side). Adjusted with information on area west.
GEH	Great Expectations Hosta Hosta 'Great Expectations'	1 gallon	4	Inside south screen wall (north side). Adjusted with information on area west.
GH	Guacamole Hosta Hosta 'Guacamole'	1 gallon	4	Inside south screen wall (north side). Adjusted with information on area west.
DMH	Orange Marmalade Hosta Hosta 'Orange Marmalade'	1 gallon	5	Inside south screen wall (north side). Adjusted with information on area west.
SGH	Stained Glass Hosta Hosta 'Stained Glass'	1 gallon	4	Inside south screen wall (north side). Adjusted with information on area west.
AGL	Anne Greenway Liriodendron <i>Liriodendron tulipifera</i> 'Anne Greenway'	1 gallon	50	West of front door.
OF	Olive Fern <i>Matteuccia struthiopteris</i>	1 gallon	37	West elevation east of screen wall.
VB	Virginia Bluebell <i>Mertensia virginica</i>	1 gallon	24	West elevation east of screen wall.
EBCP	Emerald Blue Creeping Phlox <i>Phlox subulata</i> 'Emerald Blue'	1 gallon	36	Plaza.
AJS	Autumn Joy Sedum <i>Sedum spectabile</i> 'Autumn Joy'	1 gallon	15	Plaza.
FSS	Fairy Solomon's Seal <i>Silphium laciniatum</i>	1 gallon	62	West elevation east of screen wall. 100' consider other <i>Silphium</i> alternatives.
Alternative Lawn / Understory Grasses				
SBG	Sundancer Buffalo Grass <i>Bouteloua curtipendula</i> 'Sundancer'	NA	Seeded	Approximately 1,225 SF. Top/west of plaza area.
POS	Prairie Dropseed <i>Sporobolus airoides</i>	1 gallon	302	East of front door on south elevation.

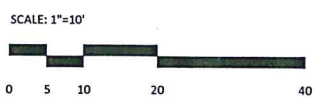
JLG
 architects

416 East Main Avenue
 Bismarck, ND 58501
 phone 701.255.1617
 faxline 701.255.1637
 www.jlgarchitects.com
 copyright © 2017

REVISION SCHEDULE

NO.	DESCRIPTION	DATE

FIRST WESTERN BANK & TRUST
BISMARCK BRANCH BUILDING
 BISMARCK, ND



1 PLANTING PLAN
 SCALE: 1/8"=1'-0"

DATE 03/27/17
 PHASE CD
 PROJECT JLG 16127
 SHEET **L200**
 PLANTING PLAN

SP 17-30