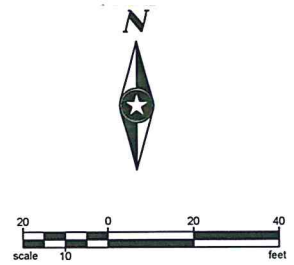
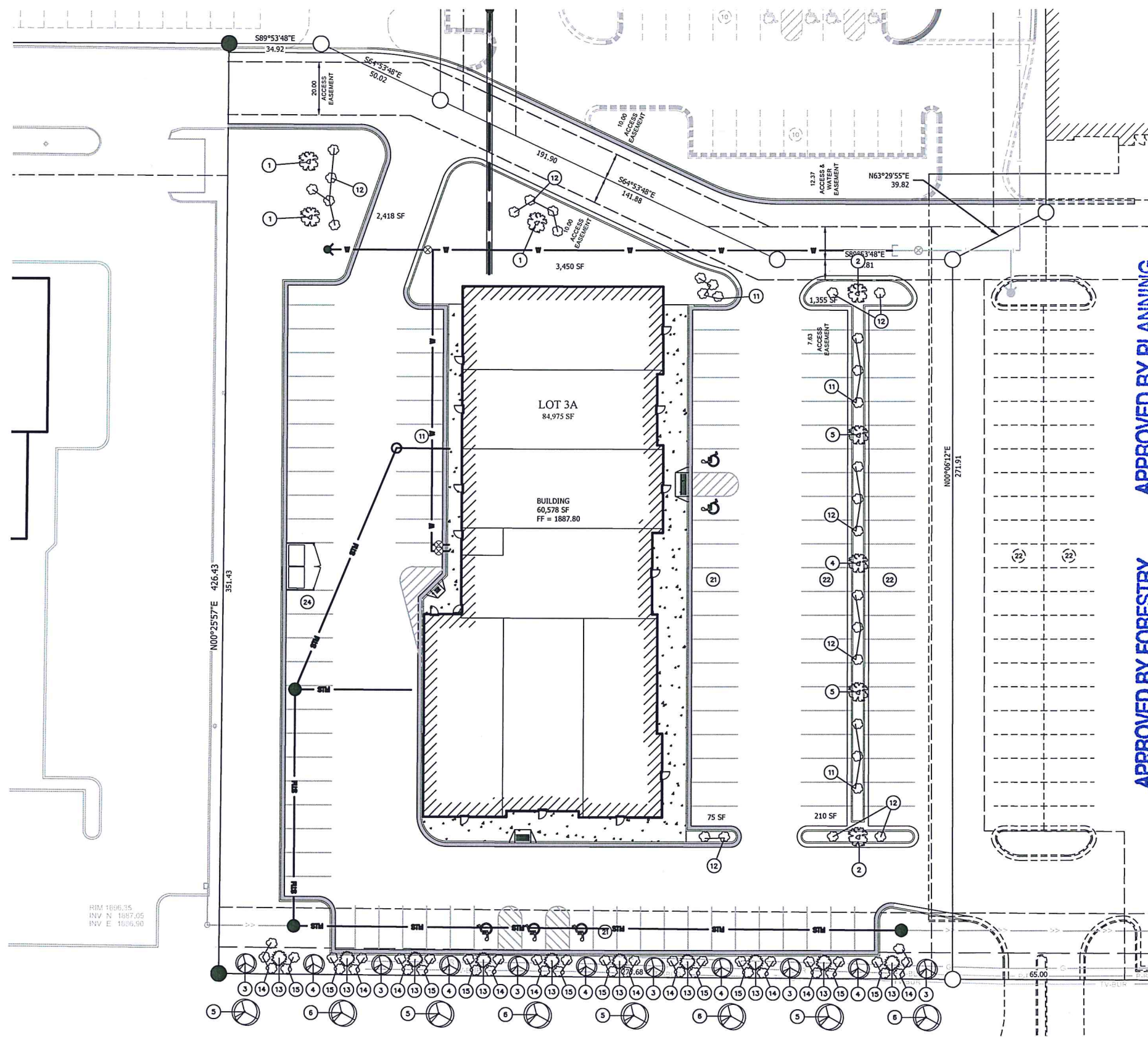


SP2018-042

DATE: 8/16/18
 PROJECT NO: 146512
 DRAWN BY: WE
 CHECKED BY: KN
 REVISIONS:



- NOTES:**
- LANDSCAPE CONTRACTOR IS RESPONSIBLE FOR AND SHALL MAINTAIN THE LANDSCAPING FOR 90 DAYS PAST THE FINAL INSPECTION.
 - GENERAL CONTRACTOR SHALL GUARANTEE ALL PLANT MATERIAL FOR A PERIOD OF ONE (1) YEAR FROM DATE OF PROJECT SUBSTANTIAL COMPLETION.
 - ALL PLANT MATERIAL SHALL MEET MINIMUM REQUIREMENTS SHOWN IN THE "AMERICAN STANDARDS FOR NURSERY STOCK" (ANSI Z60.1-1990).
 - EACH TREE AND SHRUB SHALL BE SECURELY LABELED WITH A WATERPROOF TAG INDICATING BOTANICAL NAME AND COMMON NAME FOR DELIVERY TO SITE.
 - NO PLANT MATERIAL SHALL BE SUBSTITUTED WITHOUT THE APPROVAL OF THE OWNER. ALL PLANTING LOCATIONS FOR TREES AND SHRUBS SHALL BE FLAGGED BY THE CONTRACTOR AND APPROVED BY THE OWNER, PRIOR TO INSTALLATION.
 - ALL SHRUB AND TREE PLANTING AREAS SHALL BE EXCAVATED AND BACK-FILLED WITH PLANT MIX. PROVIDE FERTILIZER WITH NOT LESS THAN 5% NITROGEN, 10% AVAILABLE PHOSPHORIC ACID AND 5% SOLUBLE POTASH, DISCARD SUBSOIL REMOVED FROM PLANTING AREA EXCAVATION. DO NOT MIX WITH PLANT MIX OR USE AS BACK-FILL. SEE DETAILS FOR COMPLETE PLANTING PREPARATION. PREPARE PLANTING AREAS AND INSTALL PLANTS COMPLETELY, PRIOR TO SEEDING.
 - ALL SHRUBS SHALL BE INSTALLED IN PROPOSED PLANTING BEDS AND COVERED WITH SHREDDED BARK MULCH OR ACCEPTABLE MATERIAL.
 - SPACING SHOWN FOR PLANTS IS FOR INFORMATION ONLY AND SHALL BE ADJUSTED AS REQUIRED TO PROVIDE UNIFORM SPACING WITHIN THE PLANTING BEDS.
 - CONTRACTOR SHALL OBTAIN PROPER PERMITS FROM THE CITY OF BISMARCK WHEN WORKING WITHIN THE RIGHT OF WAY.

APPROVED BY PLANNING
Wendy Hallock
 PLANNER 8-2-2018 DATE

APPROVED BY FORESTRY
Wendy Hallock
 LANDSCAPE 8-2-2018 DATE

PLANTING SCHEDULE:

Key	Common Name	Botanical Name	Qty.	Size	Cond.
Trees					
1	Flowering Crabapple 'Thunderchild'	Malus x hybrids	3	2" cal. min.	B & B
2	Ivory Silk Tree Lilac	Syringa reticulata 'Ivory Silk'	2	2" cal. min.	B & B
3	Thornless Honeylocust	Gleditsia triacanthos 'Inermis'	6	2" cal. min.	B & B
4	Norway Maple 'Golumnar'	Acer platanoides	6	2" cal. min.	B & B
5	American Linden 'Boulevard'	Tilia americana	6	2" cal. min.	B & B
6	Hackberry	Celtis occidentalis	4	2" cal. min.	B & B
Shrubs					
11	Goldmound Spirea	Spiraea japonica or x bumalda	10	2 gal.	Cont.
12	Yellow Flowering Forsythia 'Meadowlark'	Forsythia hybrids	21	2 gal.	Cont.
13	Bush Honeysuckle	Diervilla lonicera	10	2 gal.	Cont.
14	Carol Mackie	Daphne x burkwoodii	23	2 gal.	Cont.
15	Anthony Waterer Spirea	Spiraea japonica or x bumalda	20	2 gal.	Cont.

Shade Trees 1.5" Caliper measured 6" above the root collar
 Ornamental Trees 1.0" Caliper measured 6" above the root collar
 Large Coniferous Tree 4 feet above grade
 Shrubs 2 gal Container

Boulevard trees along 43rd Avenue to be installed when 43rd Avenue is urbanized.

BISMARCK RETAIL
 LOT 3A OF LOT 3, BLOCK 1
 CHRISTIANSON FIRST ADDITION
 TO THE CITY OF BISMARCK
 BURLEIGH COUNTY, NORTH DAKOTA

NOT FOR CONSTRUCTION
 CONSTRUCTION SET

PHONE: 701.354.7121
 4719 SHELburne ST., SUITE 6
 BISMARCK, ND 58503-5677
 www.sehinc.com

SHEET DESCRIPTION:
 Landscaping Plan



Sheet
C7.0
 of 8