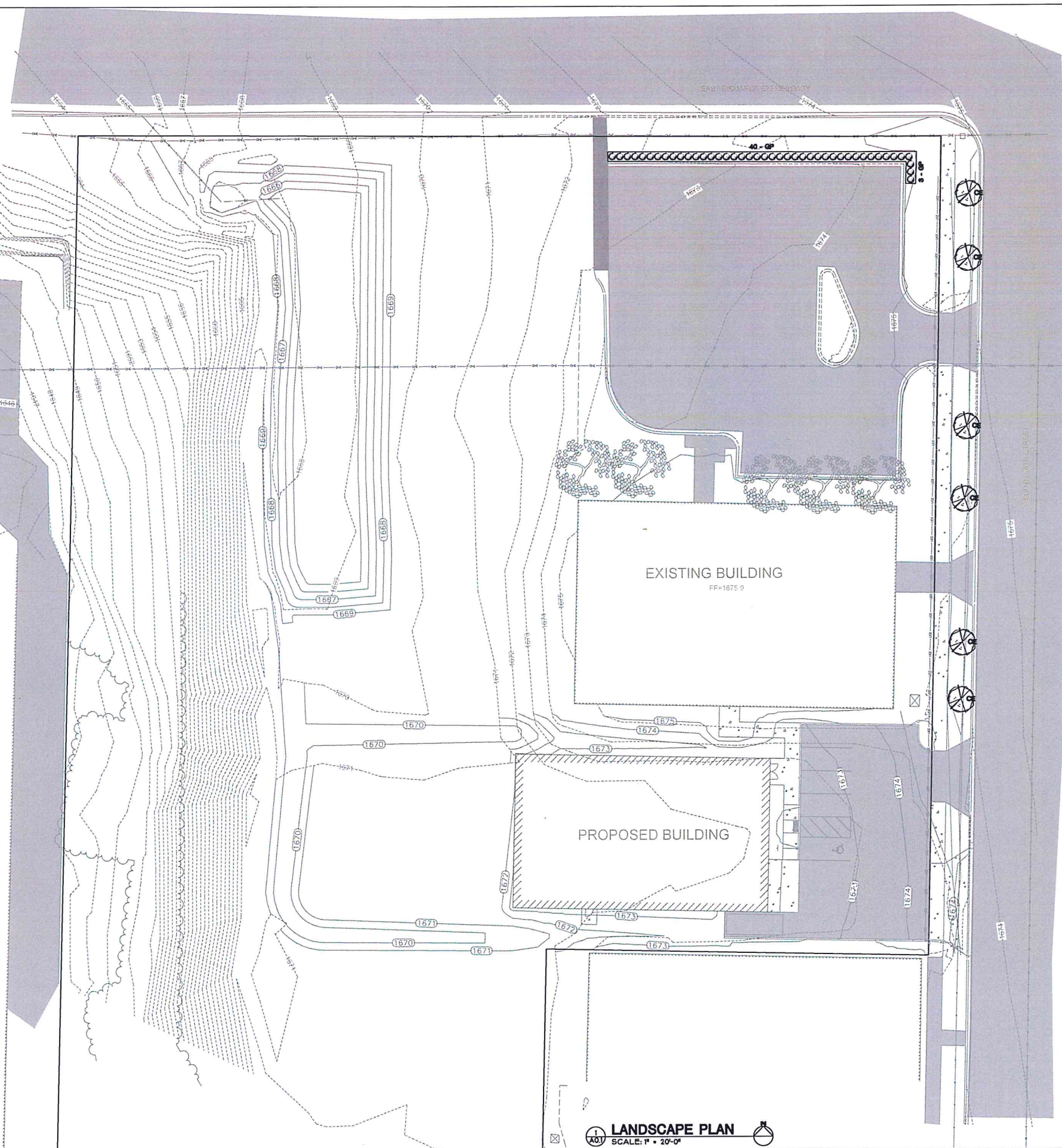


SP2019-006

APPROVED BY FORESTRY
[Signature]
DATE 4-11-19

APPROVED BY PLANNING
[Signature]
DATE 4-11-19



GENERAL LANDSCAPING NOTES FOR ALL SHEETS

- 1. ALL CONTRACTORS WISHING TO SUBMIT BIDS FOR THIS LANDSCAPING PROJECT SHALL BE RESPONSIBLE FOR FIELD VERIFYING ALL CONDITIONS.
- 2. PROTECT THE IMPROVEMENTS ON SITE AND ON THE ADJOINING PROPERTIES. PROVIDE BARRICADES, COVERINGS OR OTHER TYPE OF PROTECTION AS NECESSARY TO PREVENT DAMAGE AND TO SAFEGUARD AGAINST INJURY TO EXISTING UTILITIES.
- 3. DAMAGE THAT OCCURS TO PLANTS DURING TRANSPORTATION AND INSTALLATION WILL BE THE RESPONSIBILITY OF THE LANDSCAPE CONTRACTOR.
- 4. MOST PLANTING BEDS SHALL BE INSTALLED WITH 3" OF 1" CRUSHED ROCK MULCH, LANDSCAPE FABRIC WITH A MINIMUM HEIGHT OF 4 OZ./SQ. YD. AND WHEREVER NECESSARY, 6" COMMERCIAL GRADE BLACK PLASTIC EDGING TO CONTAIN THE PLANTING BED. THE RIBBONGRASS PLANTING BEDS ALONG 7TH STREET SHALL BE INSTALLED WITH 3" OF SHREDDED CEDAR WOOD MULCH AND NO FABRIC.
- 5. LANDSCAPE CONTRACTOR SHALL BE RESPONSIBLE FOR WATERING AND CARING FOR ALL PLANT MATERIAL, SEED, AND OTHER LANDSCAPING IMPROVEMENTS UNTIL THE DATE OF FINAL INSPECTION AND APPROVAL.
- 6. SOLITARY TREES DO NOT NEED TO BE EDGED AROUND, HOWEVER ORGANIC WOOD MULCH SHALL BE PLACED AROUND THE TREE IN A MUTILLE RING THAT CONFORMS TO THE DETAIL PROVIDED FOR TREE PLANTINGS.
- 7. CONTRACTOR SHALL PROVIDE WRITTEN WARRANTIES CONFIRMING THE FOLLOWING: FURNISHED TREES, SHRUBS, AND PERENNIALS GUARANTEED TO LIVE AND REMAIN IN A STRONG, VIGOROUS, AND HEALTHY CONDITION FOR 365 DAYS MINIMUM FROM DATE LANDSCAPE INSTALLATION IS ACCEPTED AS COMPLETED.

PLANT PALETTE

SYM	COMMON NAME	SCIENTIFIC NAME	SIZE	QTY.
TREES				
CE	CATHEDRAL ELM TREES	Ulmus 'cathedral'	1 1/2"-1 3/4" Cal.	6
SHRUBS				
GP	GOLDFINGER POTENTILLA SHRUBS	Potentilla fruticosa 'Goldfinger'	2 Cal.	43

TOPSOIL NOTES

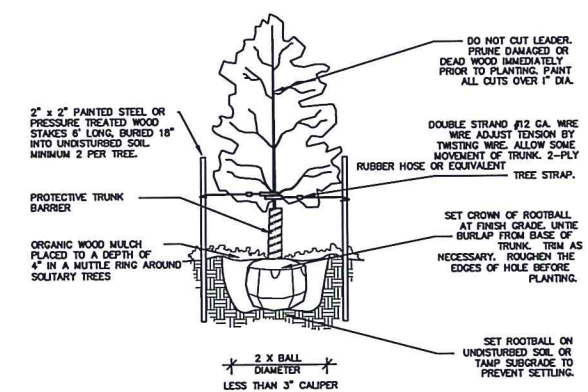
- 1. TOPSOIL SHALL BE PLACED OVER ALL PORTIONS OF THE SITE TO RECEIVE SEED OR PLANTING BED IMPROVEMENTS. TOPSOIL SHALL BE IMPORTED.
- 2. IMPORTED TOPSOIL SHALL BE NATURAL, FRIABLE, FERTILE, FINE, SANDY-LOAM TOPSOIL. IT SHALL BE FREE FROM STONES, NODULOUS WEEDS, STONE, LIME, CEMENT, ASHES, SLAG, OR OTHER DELETERIOUS MATTER.
- 3. TOPSOIL SHALL BE PLACED AND SEEDED AS SOON AS PRACTICAL TO MINIMIZE WIND AND WATER EROSION. BACKFILL BEHIND CURBS AND GUTTERS AND SIDEWALK AS SOON AS REASONABLE TO PREVENT STANDING WATER AND PROTECT THE IMPROVEMENTS.

UTILITY NOTES

- 1. THERE ARE OTHER UTILITIES ON THIS SITE THAT WERE NOT DEPICTED FOR GRAPHIC CLARITY. REFER TO ALL OTHER CIVIL SHEETS FOR LOCATIONS AND DEPTHS (WHERE AVAILABLE) OF THESE UTILITIES. CONTACT NORTH DAKOTA ONE CALL BEFORE COMMENCING WORK ON THIS SITE.

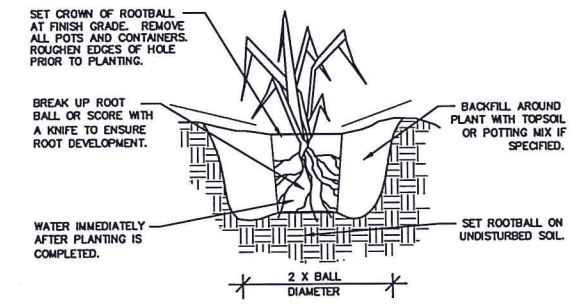
LANDSCAPING REQUIREMENTS

- REQUIRED STREET TREES: 3 TREES PER 100 FEET OF STREET FRONTAGE ALONG SOUTH 18TH STREET - 320 FEET = 6 OR 7 TREES.
- PROVIDED STREET TREES: 3 TREES PER 100 FEET OF STREET FRONTAGE = 6 ALONG SOUTH 18TH STREET (DUE TO PROXIMITY OF OVERHEAD POWER AS PER PRELIMINARY CITY REVIEW).
- STREET TREES ALONG EXPRESSWAY WILL BE WAIVED DUE TO OVERHEAD POWER LINE AS PER SITE PLAN REVIEW.
- REQUIRED PERIMETER PARKING: CONTINUOUS HEDGE.
- PROVIDED PERIMETER PARKING: CONTINUOUS HEDGE.



TREE PLANTING DETAIL

TYPICAL FOR ALL DECIDUOUS, SINGLE-TRUNK, TREES NTS



SHRUB/PERENNIAL PLANTING DETAIL

TYPICAL FOR ALL SHRUBS AND PERENNIALS NTS

LANDSCAPE PLAN
SCALE: 1" = 20'-0"

REH
ARCHITECTS & PLANNERS P.C.
711 PARKWOOD DRIVE, SUITE 110, BISMARCK, ND 58504
PH: 701.237.1700 FAX: 701.237.2806

FIRESIDE OFFICE SOLUTIONS
WAREHOUSE
BISMARCK, NORTH DAKOTA

LANDSCAPE PLAN

REVISIONS

DRAWN BY JLF, TSB
DATE 4-11-19
PROJECT NO. 1711

SHEET NO.
A0.1