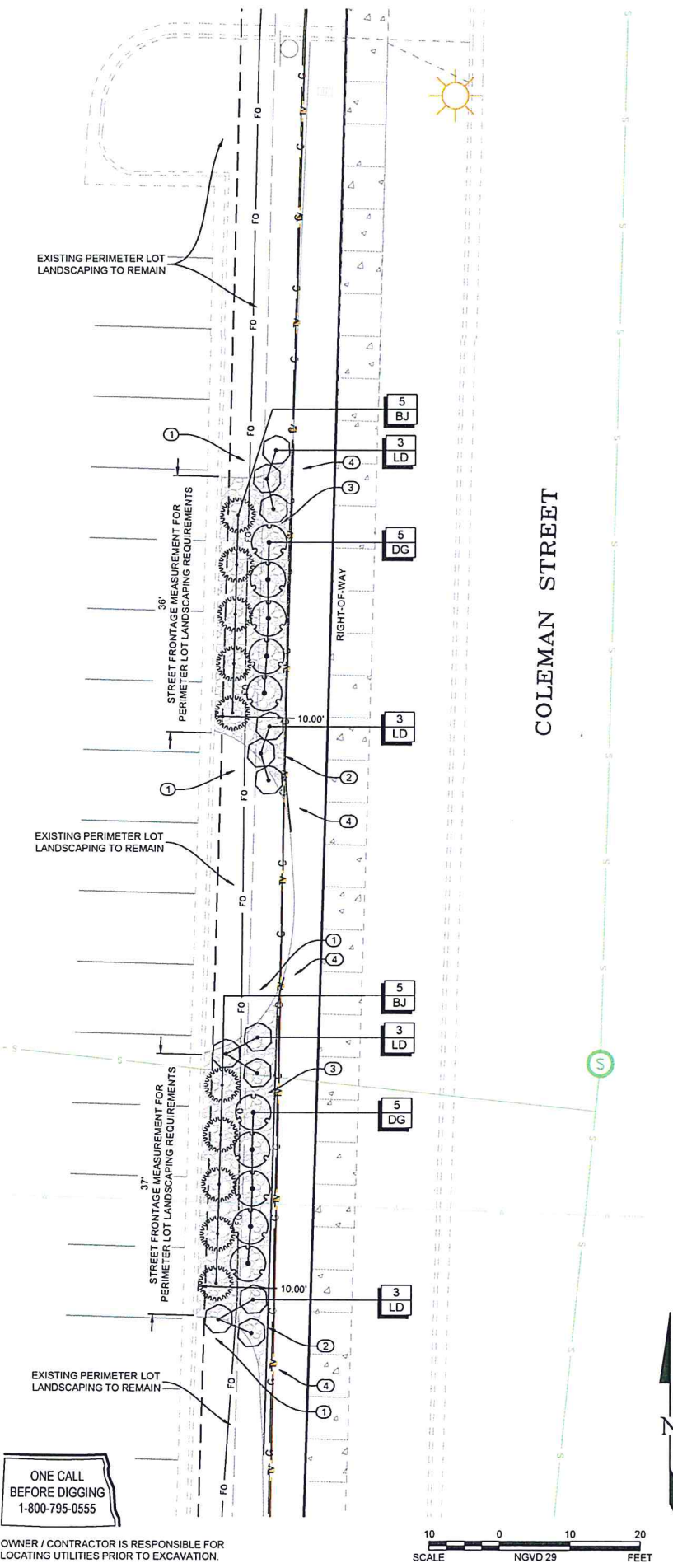


5/2019-040



CITY OF BISMARCK LANDSCAPE REQUIREMENTS, PER ORDINANCE 14-03-11:

INTERIOR LOT LANDSCAPING - INTERIOR LOT LANDSCAPING PREVIOUSLY INSTALLED

PERIMETER LOT LANDSCAPING - REQUIRED: 4 TREES & 40 SHRUBS FOR EVERY 100 LINEAR FEET OF STREET FRONTAGE

COLEMAN STREET - TOTAL STREET FRONTAGE REMAINING TO BE LANDSCAPED: 73/100 = 3 TREES & 29 SHRUBS | PROVIDED: 0 TREES & 32 SHRUBS
*TREES WERE OMITTED DUE TO THE LOCATION OF EXISTING GAS AND FIBER OPTIC LINES.

STREET TREES - REQUIRED: 3 TREES PER 100 LINEAR FEET OF STREET FRONTAGE

COLEMAN STREET: STREET TREES WERE PREVIOUSLY INSTALLED ALONG COLEMAN AVE.

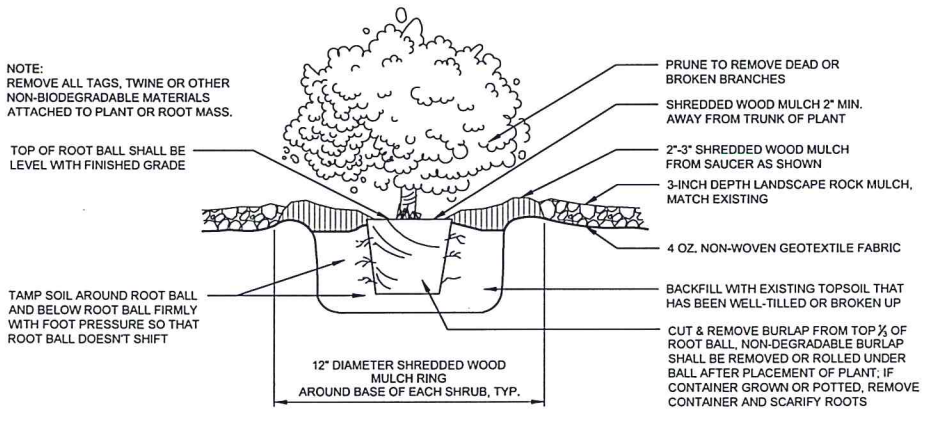
43RD AVE NE: 467.42/100 = 14 STREET TREES - IN THE FUTURE, IF THE 43RD AVENUE NE IMPROVEMENT PROJECT DOES NOT INCLUDE STREET TREES, DCN AGREES TO INSTALL UP TO 14 STREET TREES IN THE BOULEVARD OF 43RD AVENUE NE AT APPROXIMATELY 33-FOOT SPACING AND OF A VARIETY APPROVED BY THE CITY OF BISMARCK FORESTER.

PLANT SCHEDULE

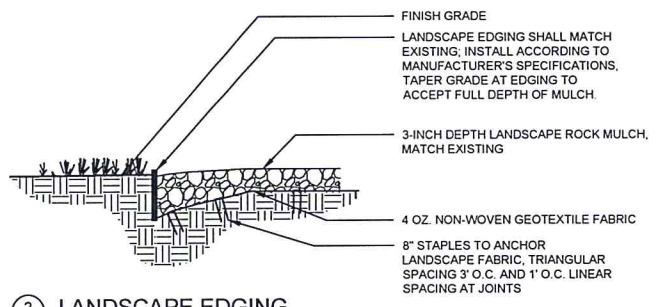
SHRUBS	QTY	COMMON NAME	BOTANICAL NAME	TYPE
BJ	10	Buffalo Juniper	Juniperus sabina 'Buffalo'	#2 CONT.
DG	10	Dart's Gold Ninebark	Physocarpus opulifolius 'Dart's Gold'	#2 CONT.
LD	12	First Editions® Little Devil™ Ninebark	Physocarpus opulifolius 'Donna May'	#2 CONT.

- LANDSCAPE PLAN KEYNOTES**
- EXISTING LANDSCAPE ROCK, FABRIC, AND PLANTS TO REMAIN; REMOVE EXISTING LANDSCAPE EDGING WHERE NEW PLANT BED MEETS EXISTING
 - INSTALL ALUMINUM LANDSCAPE EDGING TO MATCH EXISTING, COLOR: BLACK, SEE DETAIL 2/C7.0, MEET EXISTING EDGING WITH A SMOOTH AND GRADUAL TRANSITION (±120 LF)
 - INSTALL 12" DEPTH TOPSOIL IN PLANTING BED, INSTALL LANDSCAPE ROCK TO MATCH EXISTING OVER 4 OZ. NON-WOVEN GEOTEXTILE FABRIC (AREA: ±92 SY); NEW NON-WOVEN GEOTEXTILE FABRIC SHALL OVERLAP EXISTING 1-FOOT MIN.
 - RESTORE ALL TURF AREAS DISTURBED BY CONSTRUCTION ACTIVITIES TO MATCH EXISTING. RELOCATE IRRIGATION COMPONENTS AS NECESSARY SO PLANTING BEDS AND TURF REMAIN IRRIGATED.

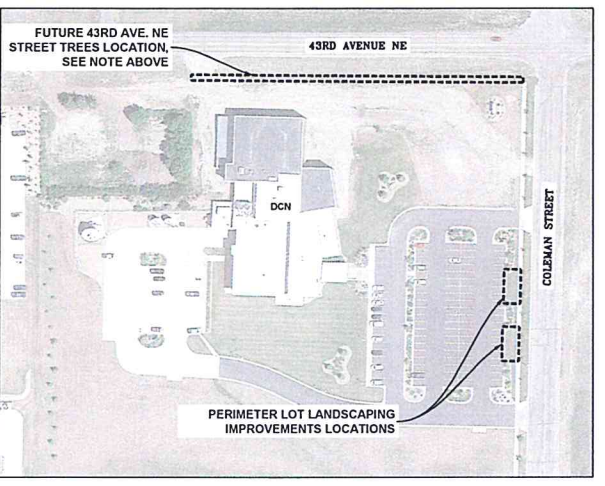
- NOTES**
- ALL DIMENSIONS ARE LISTED TO FACE OF CURB UNLESS OTHERWISE NOTED.
 - EXISTING SITE CONDITIONS WERE DRAWN FROM RECORD DRAWINGS. PRIOR TO ANY SITE DISTURBANCE OR EXCAVATION, UTILITIES SHALL BE LOCATED AND MARKED USING ND ONE CALL AS SHOWN. PRIVATE UTILITIES SHALL BE COORDINATED WITH OWNER.
 - PLANT LOCATIONS ARE DIAGRAMMATIC AND MAY BE ADJUSTED IN THE FIELD.
 - WHERE DISCREPANCIES MAY ARISE BETWEEN THE QUANTITIES OF PLANT MATERIALS INDICATED ON THE PLANT SCHEDULE AND SYMBOLS ON PLAN SHEETS, PROVIDE THE QUANTITY SHOWN BY SYMBOLS ON PLAN SHEETS.



1 SHRUB PLANTING NOT TO SCALE



2 LANDSCAPE EDGING NOT TO SCALE



APPROVED BY FORESTRY

Gray Foreside

TITLE DATE 7-11-19

APPROVED BY PLANNING

Wm. Haddock

TITLE DATE 7-11-19

ONE CALL BEFORE DIGGING 1-800-795-0555

OWNER / CONTRACTOR IS RESPONSIBLE FOR LOCATING UTILITIES PRIOR TO EXCAVATION.

SCALE 0 10 20 FEET NGVD 29

STROH
ARCHITECTS INTERIORS
8 Seventh St. N.
Fargo, N.D. 58102
Office (701) 239-4198
Fax (701) 239-9643
www.tlstrom.com

KLJ

Project: NEW ADDITION & FACILITY FOR:
BISMARCK PSAP/EOC
DCN
Dakota Carrier NETWORK

New Addition & Facility For:
BISMARCK PSAP/EOC
Dakota Carrier NETWORK
43rd AVENUE & COLEMAN STREET
BISMARCK, NORTH DAKOTA

Location:
43rd AVENUE & COLEMAN STREET
BISMARCK, ND.

Drawn By:
AJB

Date:
JULY 10, 2019

Revision Date:

Job Number:
2019.02

Sheet Name:
LANDSCAPE PLAN

Sheet Number:
C7.0

