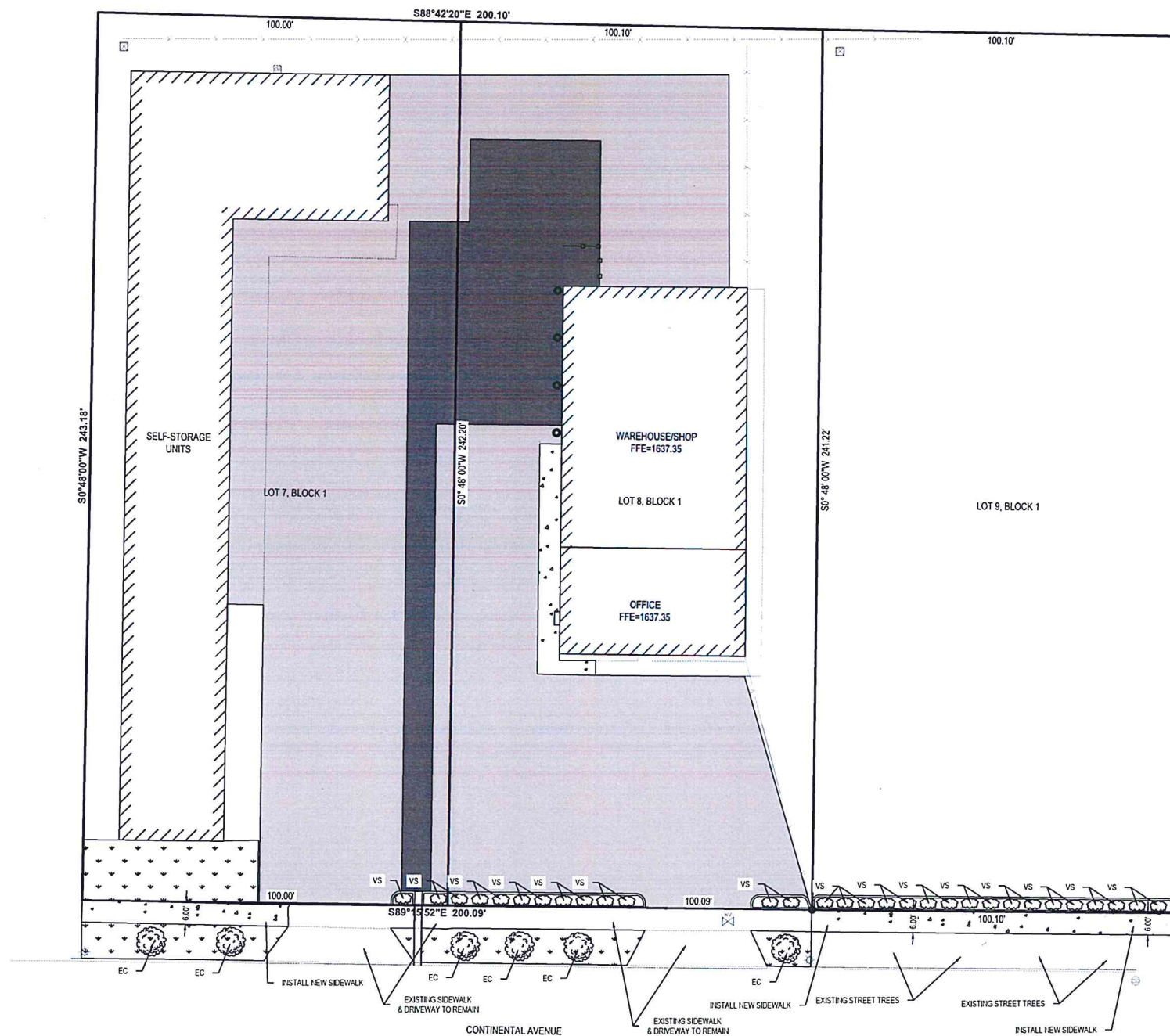
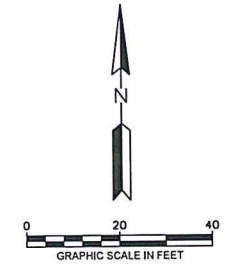


SP2019-047



- GENERAL LEGEND**
- G — UNDERGROUND GAS LINE
 - F/O — UNDERGROUND FIBER OPTIC
 - UE — UNDERGROUND ELECTRIC LINE
 - I — UNDERGROUND WATERMAIN
 - >>— UNDERGROUND SANITARY SEWER
 - >>>— UNDERGROUND STORM SEWER
 - — — EXISTING GROUND MAJOR CONTOUR
 - · — · EXISTING GROUND MINOR CONTOUR
 - X — FENCE
 - - - EXISTING PROPERTY LINE
 - ▭ SIDEWALK CONCRETE
 - ⊗ WATER VALVE
 - ⊙ SANITARY MANHOLE
 - ⊠ ELECTRIC METER
 - ⊞ TRANSFORMER
 - ⊛ LIGHT POLE
 - ⊙ DECIDUOUS TREE
 - ⊙ MONITORING WELL
 - ⊙ STORM SEWER CLEANOUT

- EXISTING CONDITIONS LEGEND**
- SHRUB S.D. 1/C300
 - ⊙ DECIDUOUS TREE 2/C300
 - ▭ CLASS II (SUNNY MIX) GRASS
 - ▭ RIVER ROCK



GENERAL NOTES

- THE INFORMATION REPRESENTED IN THESE PLANS WAS COMPILED AND DESIGNED IN CONFORMITY WITH THE INFORMATION AVAILABLE AND ESTABLISHED CIVIL ENGINEERING PRACTICES AT THE TIME THEY WERE ISSUED. NEITHER MOUNTAIN PLAINS, LLC OR ITS PERSONNEL PROVIDE WARRANTY, EXPRESSED OR IMPLIED, FOR THE INFORMATION PRESENTED IN THE PLANS.
- THE USE OF "CONTRACTOR" APPLIES TO THE PARTY RESPONSIBLE FOR THE PORTION OF WORK BEING DESCRIBED.
- IT IS THE CONTRACTOR'S RESPONSIBILITY TO VERIFY ALL EXISTING UTILITY LOCATIONS AND ELEVATIONS. EXISTING UTILITY LOCATIONS SHOWN ARE APPROXIMATE. MOUNTAIN PLAINS DOES NOT GUARANTEE THE EXACT LOCATIONS OF THE UTILITIES. THE CONTRACTOR IS REQUIRED TO CALL NORTH DAKOTA ONE CALL BY DIALING 811 OR 800-795-0555. THE CONTRACTOR IS RESPONSIBLE FOR ALL COSTS AND FEES ASSOCIATED WITH UTILITY LOCATES.
- CONTRACTOR SHALL OBTAIN PROPER PERMITS FROM THE CITY OR COUNTY WHEN WORKING WITHIN THE RIGHT-OF-WAY.
- THE COST OF MOBILIZATION IS TO BE INCLUDED IN THE PRICES BID FOR OTHER PROJECT TASKS AND SHALL INCLUDE ALL ITEMS NECESSARY FOR THE CONTRACTOR TO BE PRESENT ON SITE. THESE ITEMS INCLUDE, BUT ARE NOT LIMITED TO: CONTRACT BOND, EQUIPMENT HAULING, ROADWAY TOLLS AND FARES, LOCAL OR STATE GOVERNMENT PERMITS OR FEES, OR ANY OTHER REQUIREMENT STATED IN THE PROJECT SPECIFICATIONS.
- AREAS WITHIN RIGHT-OF-WAY WHICH ARE UTILIZED BY CONSTRUCTION TRAFFIC ARE TO BE SWEEPED PRIOR TO OPENING TO PUBLIC TRAFFIC. IT IS THE RESPONSIBILITY OF THE CONTRACTOR TO REMOVE ANY DEBRIS LEFT ON ADJACENT PUBLIC ROADWAYS OR RIGHTS-OF-WAY THAT WERE A DIRECT OR INDIRECT RESULT FROM CONSTRUCTION ACTIVITIES OF THIS PROJECT. THE UTILIZATION OF A VACUUM OR PICKUP TYPE SWEEPER IS REQUIRED TO MINIMIZE AIR CONTAMINATION. THE COST FOR PAVEMENT SWEEPING IS TO BE INCLUDED IN THE PRICES BID FOR OTHER PROJECT TASKS.
- THE CONTRACTOR SHALL PROTECT ALL PROPERTY CORNER MONUMENTS ASSOCIATED WITH THE SUBJECT AND ADJACENT PROPERTIES. CORNER MONUMENTS DISTURBED OR DESTROYED SHALL BE REPLACED BY A PROFESSIONAL LAND SURVEYOR LICENSED IN NORTH DAKOTA AT THE CONTRACTOR'S EXPENSE.
- THE STANDARD SPECIFICATIONS FOR THIS PROJECT SHALL BE "CONSTRUCTION SPECIFICATIONS FOR MUNICIPAL PUBLIC WORKS IMPROVEMENTS, BISMARCK, NORTH DAKOTA" AS APPROVED AND ISSUED MARCH 2017 BY GABRIEL J. SCHELL. THE STANDARD SPECIFICATIONS CAN BE LOCATED AT: <https://www.bismarcknd.gov/DocumentCenter/View/33042/2019-Specifications-FULL-SET>. IN THE EVENT A DISCREPANCY EXISTS BETWEEN THE PLANS AND STANDARD SPECIFICATIONS, THE PLANS SHALL SUPERCEDE.

LANDSCAPE PLAN NOTES

- THE CONTRACTOR SHALL PROVIDE A ONE YEAR GUARANTEE OF ALL PLANTS AND MATERIALS. THE GUARANTEE BEGINS ON THE DATE OF THE ENGINEER'S WRITTEN ACCEPTANCE OF THE INITIAL PLANTING. REPLACEMENT MATERIALS SHALL ALSO HAVE A ONE YEAR GUARANTEE COMMENCING UPON PLANTING.
- ALL PLANTS TO BE INSTALLED ARE TO BE NORTHERN-GROWN, HARDY, AND INSTALLED PER STANDARD AAN PLANTING PRACTICES
- USE A MINIMUM 6-IN LOAM PLANTING SOIL ON SHRUBS.
- THE CONTRACTOR SHALL VERIFY THE LOCATIONS OF ALL UTILITIES PRIOR TO THE INSTALLATION OF PLANTS.
- PRUNE PLANTS AS NECESSARY - PER STANDARD NURSERY PRACTICE.
- OWNER SHALL BE RESPONSIBLE FOR MAINTENANCE ONLY AFTER ACCEPTANCE OF THE WORK BY THE ENGINEER.
- PLANTS SHALL BE IMMEDIATELY PLANTED UPON ARRIVAL AT SITE. TEMPORARILY HEEL-IN MATERIALS IF NECESSARY.
- PLANTING BEDS FOR SHRUBS SHALL HAVE (40Z MIN.) WEED BARRIER FABRIC AND 4-IN TO 6-IN OF SHREDDED HARDWOOD MULCH.
- SEED MIX SHALL BE CONSIDERED "CLASS II" AND APPROVED BY THE ENGINEER PRIOR TO INSTALLATION.
- PRIOR TO SEEDING, A MINIMUM OF 4-INCHES OF TOPSOIL IS TO BE LAID AND SHALL BE FREE OF VEGETATION AND STONES LARGER THAN 1-INCH
- THE CONTRACTOR SHALL FURNISH THE ENGINEER DUPLICATE SIGNED COPIES OF A STATEMENT BY THE VENDOR CERTIFYING THAT EACH LOT OF SEED HAS BEEN TESTED BY A RECOGNIZED LABORATORY FOR SEED TESTING WITHIN NINE MONTHS OF THE DATE OF DELIVERY.
- DESIGN OF THE IRRIGATION SYSTEM TO BE THE RESPONSIBILITY OF THE LANDSCAPE CONTRACTOR.
- SIZES GIVEN FOR TREE AND SHRUB PLANTING ARE MATURE HEIGHT AND SPREAD.

LANDSCAPE PLAN QUANTITIES

ITEM	DESCRIPTION	UNIT	QUANTITY
1	SEEDING CLASS II	SY	200
2	RIVER ROCK	SY	27
3	TREE / SHRUB MULCHING	EA	16
4	DECIDUOUS SHADE TREE	EA	6
5	SHRUB	EA	13

APPROVED BY FORESTRY
Mike Nille
 LAWOSCHPE 10-10-19
 TITLE DATE

APPROVED BY PLANNING
Wm R. Hestley
 PLANNER 10/10/19
 TITLE DATE

ACCEPTABLE SPECIES

Legend Type	Minimum Size	Common Name	Scientific Name	Quantity
Deciduous Shade Tree	Minimum Caliper 1.5" at 6" above root collar	DED Resistant Elm Cultivar (Prairie Expedition) (EC)	<i>Ulmus 'Prairie Expedition'</i>	6
Shrub	Minimum height of 2' above grade or a minimum container size of 2 gallons	Common Lilac (CL)	<i>Syringa vulgaris</i>	13



1 SHRUB PLANTING DETAIL
 C300 NOT TO SCALE



2 DECIDUOUS TREE PLANTING DETAIL
 C300 NOT TO SCALE

NO.	DATE	DESCRIPTION
1	8/14/2019	CITY REQUESTED CHANGES
2	9/6/2019	CITY REQUESTED CHANGES
3	9/26/2019	CITY REQUESTED CHANGES

THIS DOCUMENT WAS ORIGINALLY ISSUED AND SEALED BY BRIAN J. JURDICH, REGISTERED PROFESSIONAL ENGINEER PE-10414 ON 09/26/2019 AND THE ORIGINAL LICENSED BY MOUNTAIN PLAINS, LLC BISMARCK, ND

SITE IMPROVEMENTS
 BRUCE & SHARON WALTH
 1414 CONTINENTAL AVE BISMARCK, NORTH DAKOTA



DATE	June 5, 2019
DRWN BY	JME
APPD BY	BJZ
PROJECT NO	002932
SHEET NO	C300
SHEET TITLE	LANDSCAPE PLAN