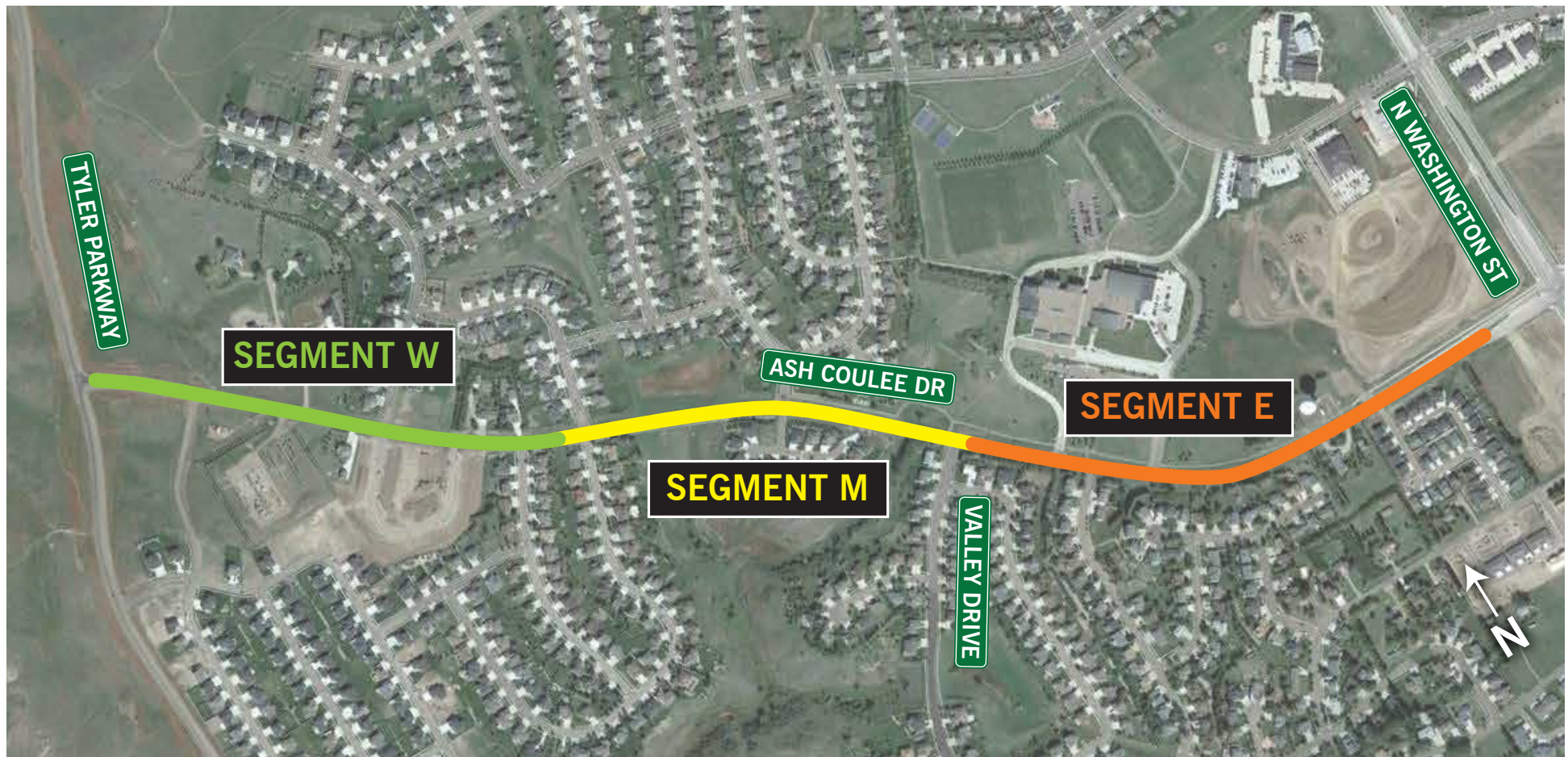


# Ash Coulee Dr Reconstruction

From Tyler Parkway/15<sup>th</sup> St NW to  
N. Washington St in Bismarck, ND



## ANTICIPATED CONSTRUCTION PHASING



Note: Construction phasing presented is conceptual. Actual phasing will vary dependent on final design and the construction contractor's proposal.