

APPROVED BY PLANNING

APPROVED BY FORESTRY

TITLE: Planner
DATE: 01/11/2023



TITLE: Landscape Arborist
DATE: 01/11/2023



38' WATER,
SANITARY,
STORMWATER &
ACCESS
EASEMENT

LOT 4
BLK 1
7' UTILITY
EASEMENT

STREET TREES

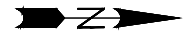
COLT AVENUE: 223 TOTAL FEET @ $\frac{3 \text{ TREES}}{100 \text{ FEET}} = 7 \text{ TREES}$
(WAIVER REQUEST)
NORTH WASHINGTON STREET: 367 TOTAL FEET @ $\frac{3 \text{ TREES}}{100 \text{ FEET}} = 11 \text{ TREES}$
STREET TREES PROVIDED: 11 TREES

PERIMETER PARKING LOT LANDSCAPING

COLT AVENUE: 183 LF @ $\frac{1 \text{ TREE} + 5 \text{ SHRUBS}}{25 \text{ FEET}} = 8 \text{ TREES} \& 37 \text{ SHRUBS}$
NORTH WASHINGTON STREET: 243 LF @ $\frac{1 \text{ TREE} + 5 \text{ SHRUBS}}{25 \text{ FEET}} = 10 \text{ TREES} \& 49 \text{ SHRUBS}$
PRIVATE ROAD: 144 LF @ $\frac{1 \text{ TREE} + 5 \text{ SHRUBS}}{25 \text{ FEET}} = 6 \text{ TREES} \& 30 \text{ SHRUBS}$
REQUIRED: 24 TREES & 116 SHRUBS PROVIDED: 24 TREES & 120 SHRUBS

INTERIOR PARKING LOT LANDSCAPING

GREEN SPACE REQUIRED: 88 PARKING STALLS @ $\frac{105 \text{ SF}}{20 \text{ PARKING STALLS}} = 890 \text{ SF}$
LANDSCAPE REQUIRED: 88 PARKING @ $\frac{1 \text{ TREE} + 3 \text{ SHRUBS}}{20 \text{ PARKING STALLS}}$
REQUIRED: 880 SF GREEN SPACE, 5 TREES, & 14 SHRUBS
PROVIDED: 1569 SF GREEN SPACE, 5 TREES, & 16 SHRUBS



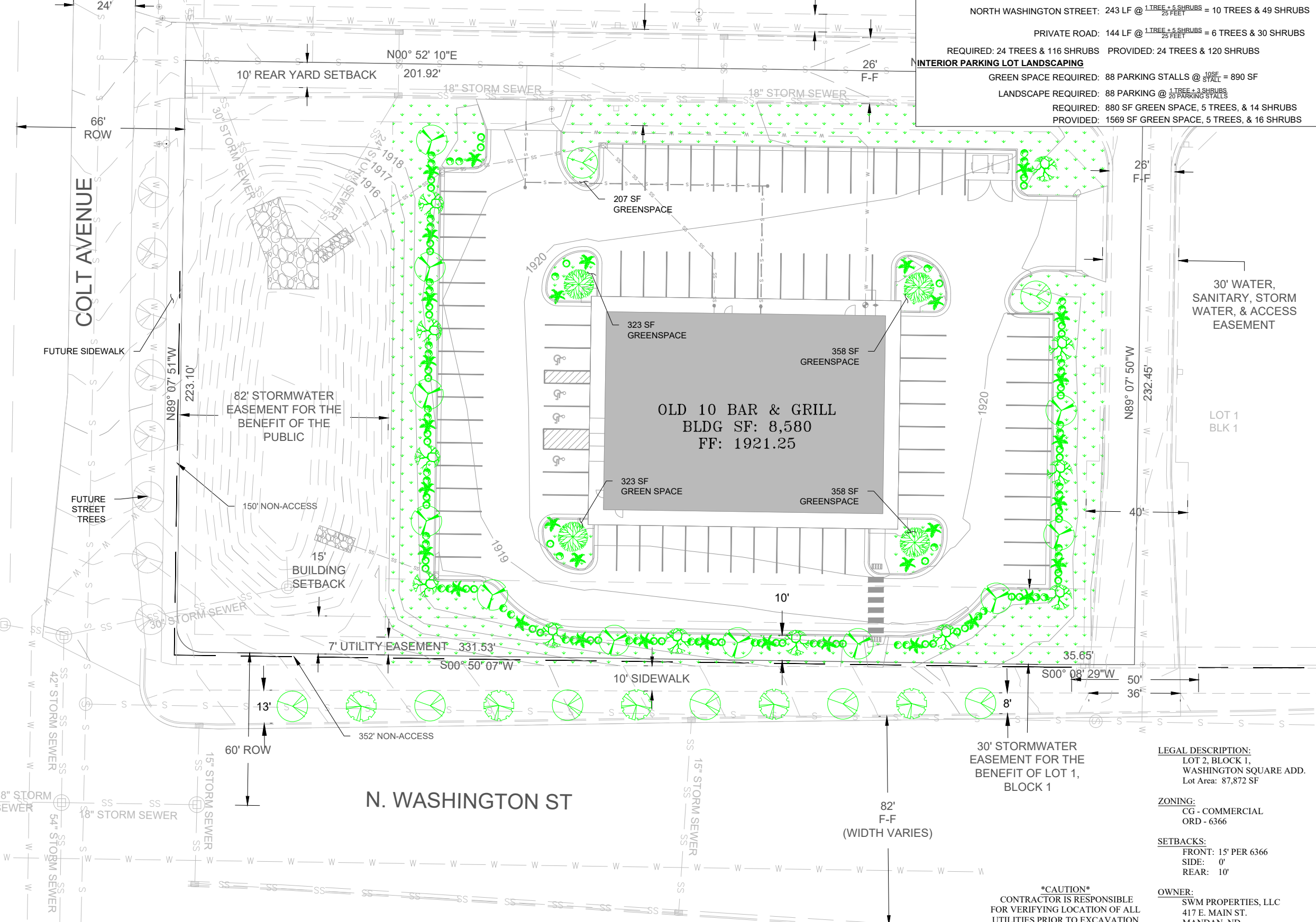
SCALE: 1" = 40'
0 20 40

SURVEY INFO: VERT. DATUM: NAVD88
HORIZ DATUM: 1983 STATE PLANE, ND SOUTH (3302)

LEGEND

SHRUBS / TREES:

- FRITSCH SPIREA
H=2-3', S=3-5'
Spiraea fritschiana
SIZE=2 GAL, QUANTITY=52
- TINY WINE NINEBARK
H=3-4', S=3-4'
Phacocarpus opulifolius
SIZE=2 GAL, QUANTITY=31
- MOPS MUGO PINE
H=3-4', S=3-4'
Pinus mugo 'Mops'
SIZE=2 GAL, QUANTITY=52
- LITTLELEAF LINDEN
H=35', S=30'
Tilia cordata
SIZE=1" CALIPER, QUANTITY=8
- AMUR MAPLE
H=15'-20', S=25'
Acer ginnala
SIZE=1" CALIPER, QUANTITY=12
- BUR OAK
H=65', S=60'
Quercus macrocarpa
SIZE=1" CALIPER, QUANTITY=5
- NEW HORIZON ELM
H=50-60', S=25'-30'
Ulmus 'New Horizon'
SIZE=1" CALIPER, QUANTITY=11
- GLADIATOR CRABAPPLE
H=18-20', S=9-12'
Malus x adstringens 'Durleo'
SIZE=1" CALIPER, QUANTITY=4
- PERMANENT GREEN AREA



THIS DOCUMENT WAS ORIGINALLY
ISSUED AND SEALED ON 3/24/2022
BY ABRAHM E. ULMER
REGISTRATION NO. 6693
ORIGINAL DOCUMENT IS STORED ON FILE AT
ILSE INC.

LEGAL DESCRIPTION:
LOT 2, BLOCK 1,
WASHINGTON SQUARE ADD.
Lot Area: 87,872 SF

ZONING:
CG - COMMERCIAL
ORD - 6366

SETBACKS:
FRONT: 15' PER 6366
SIDE: 0'
REAR: 10'

OWNER:
SWM PROPERTIES, LLC
417 E. MAIN ST.
MANDAN, ND

CAUTION
CONTRACTOR IS RESPONSIBLE
FOR VERIFYING LOCATION OF ALL
UTILITIES PRIOR TO EXCAVATION

REVISED ON 3/24/2022

Independent Land Surveying
& Engineering Inc.
4215 OLD RED TRAIL NW, Mandan, ND 58554
Phone: 701-663-5184 Cell: 701-220-0968 PROJ # 22003

OLD 10 BAR & GRILL
PROPOSED LANDSCAPING

4100 N. WASHINGTON STREET
BISMARCK, NORTH DAKOTA
LOT 2, BLOCK 1, WASHINGTON SQUARE ADDITION
SHEET 6 OF 6
FEBRUARY, 2022