

**LANDSCAPE SCHEDULE:**

COMMON NAME/LATIN NAME	MIN SIZE	ROOT
Tatarion Maple	2.0" CAL.	B&B
Acer totoricum		
Springnow Crabapple	1.5" CAL.	B&B
Morus x Springnow		

**LANDSCAPE REQUIREMENT:**

- 1 SHAPE OR ORNAMENTAL TREE PER 33 LF OF FRONTAGE
- \* CARBINE AVENUE 422.16 LF OF FRONTAGE = 13 TREES

**PLAN PROPOSES:**

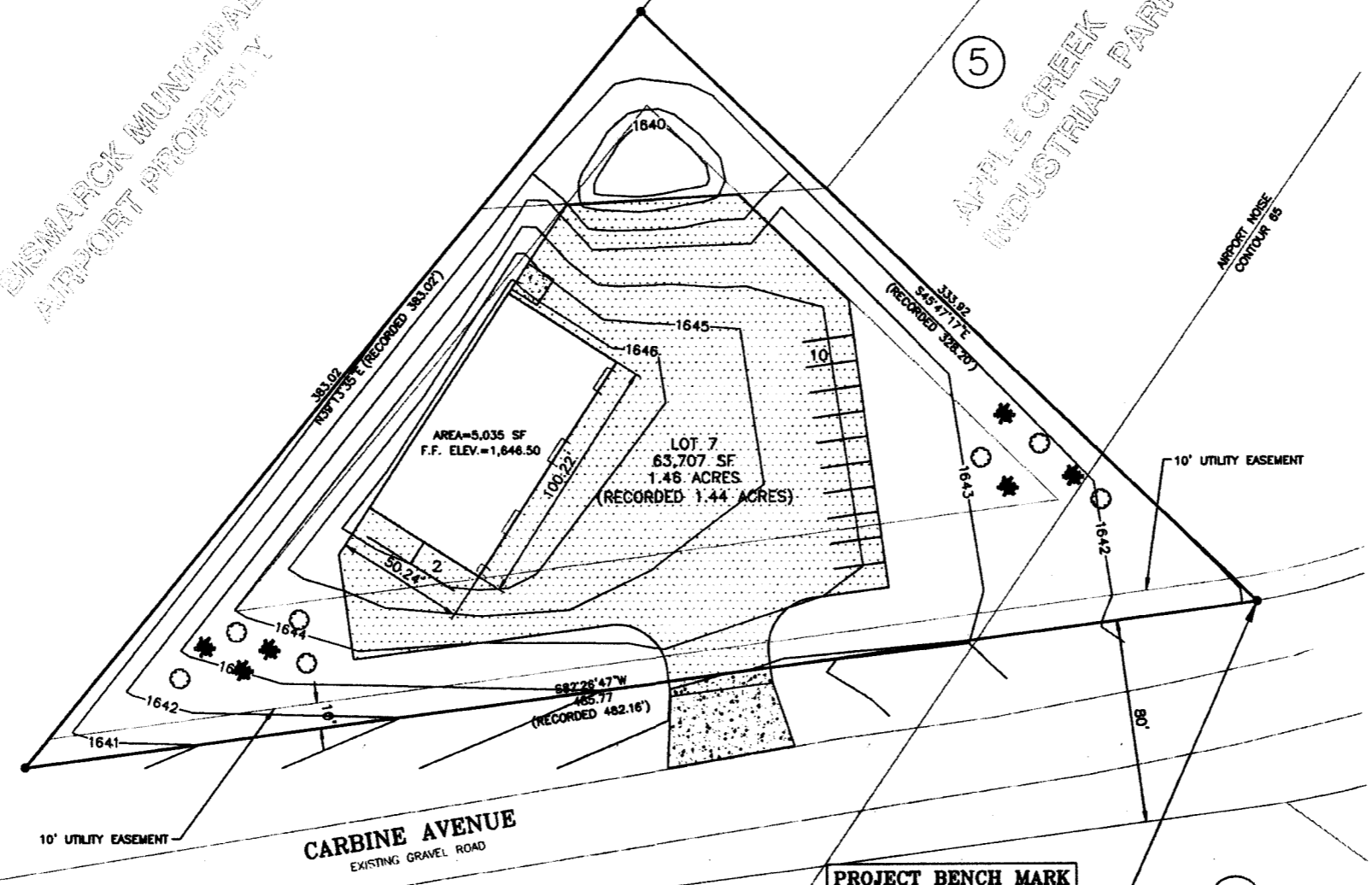
- 7 TATARIAN MAPLE
- 6 SPRINGSNOW CRABAPPLE

**LANDSCAPE NOTES:**

1. ALL LANDSCAPING SHALL CONFORM TO SECTION 14-03-11 OF CITY OF BISMARCK TITLE 14 ZONING ORDINANCE.
2. SEE ORIGINAL SITE PLAN SUBMITTAL FOR ALL EXISTING AND PROPOSED GRADES, EROSION CONTROL, AND UNDERGROUND UTILITIES PRIOR TO BREAKING GROUND.
3. ALL TREES TO RECEIVE SHREDDED HARDWOOD MULCH RINGS WITH MIN. 3" RADIUS UNLESS OTHERWISE NOTED. ALL SHRUB PLANTING AREAS TO RECEIVE 1"-2" DIAMETER CRUSHED ROCK MULCH WITH 4" PVC EDGE.
4. CONTRACTOR TO GUARANTEE LIFE OF ALL ON SITE PLANT MATERIAL FOR 1 YEAR.
5. LOT BOUNDARY DIMENSIONS AND AREA ARE PLATTED DIMENSIONS.

BISMARCK MUNICIPAL  
AIRPORT PROPERTY

APPLE CREEK  
INDUSTRIAL PARK



APPROVED BY PLANNING  
*Sham Tond*  
**PLANNER 11-03-11**  
DATE

**PROJECT BENCH MARK**  
S.W. PROPERTY CORNER  
(NAVD 1988 DATUM)  
ELEV. 1,640.88



T:\pds-001 Apple Creek\11A\6684-001 Block 5, Apple Creek Ind\CAD\dwg\LOT7 Site Plan\landscape Plan-10/28/2011 9:49 AM (jwarne)

No.	Revision	Date	By		Bismarck P: 701.323.0200 F: 701.323.0300	Drawn by MJF/AAS Checked by CJE	Date 05-10-11 Scale AS SHOWN	APPLE CREEK INDUSTRIAL PARK STORAGE MARINER CONSTRUCTION, INC. BISMARCK, NORTH DAKOTA	LANDSCAPE PLAN LOT 7 PROJECT NO. 6684-001	SHEET 1 of 2

APPLE CREEK STORAGE 11 SP46-11  
4500 CARBINE AVENUE